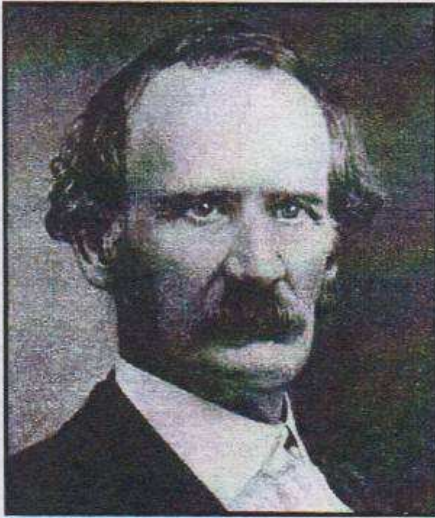


MILLIGAN ARTICLE MENTIONS WABASH & ERIE CANAL

CSI headquarters received the following message in an E-mail from Dawn E. Bakken , associate editor of the Indiana Magazine of History:



**LAMB DIN PURDY
MILLIGAN**

**B. March 24, 1812
D. December 21, 1899
Find-A-Grave #68430454**

**Mount Hope Cemetery
Huntington, Indiana**

The December 2013 issue of the Indiana Magazine of History focuses on the landmark 1866 U.S. Supreme Court case Ex Parte Milligan, revealing new detail on the life of the man-Lambdin P. Milligan-whose arrest and trial for treason prompted the case itself, and showing how his case has gained relevance in a post-9/11 world.

The issue begins with scholar Stephen E. Towne's detailed biographical look at Lambdin P. Milligan, the Hunt-

ington, Indiana, lawyer and politician who was arrested, tried, and convicted of treason during the Civil War for his role in a planned attempt to overthrow the government of the state of Indiana. A civilian tried by a military tribunal, Milligan pursued legal appeals all the way to the Supreme Court, where the justices found that civilians, even in time of war, must be given a civil trial as long as the courts remain open. Milligan himself has frequently been portrayed as a martyr for free speech and a victim of unjust arrest. Towne's meticulous research through primary records uncovers the depth of Milligan's involvement in anti-Union secret organizations and in their conspiracies. "Milligan," he writes, "driven by his long-held ideologies, conspired against his government. He was simply tried in the wrong court."

Headquarters also received notification about the article from Chuck Hupper, CSI member from Burtonsville, Maryland, and the following from Sam Liggett, CSI member from Terre Haute, Indiana:

In the December 2013 issue of the Indiana Magazine of History there is an article entitled "The Persistent Nullifier, The Life of Civil War Conspirator Lambdin P. Milligan" by Stephen E. Towne. In this article the Wabash & Erie Canal is mentioned twice. One is on page 319 reference to winter traffic on the canal verses the railroad. The second is on page 324 and has to do with the murder of a drunken canal boatman in Huntington County, IN.